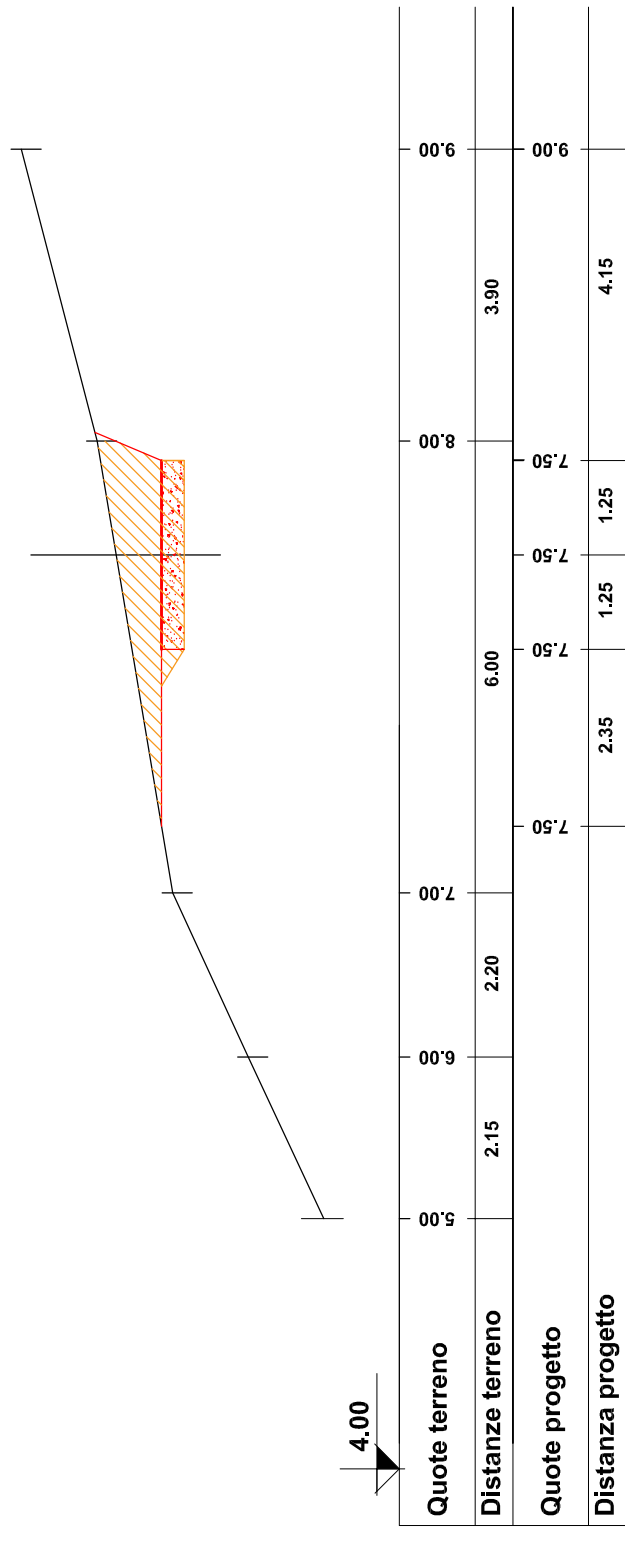
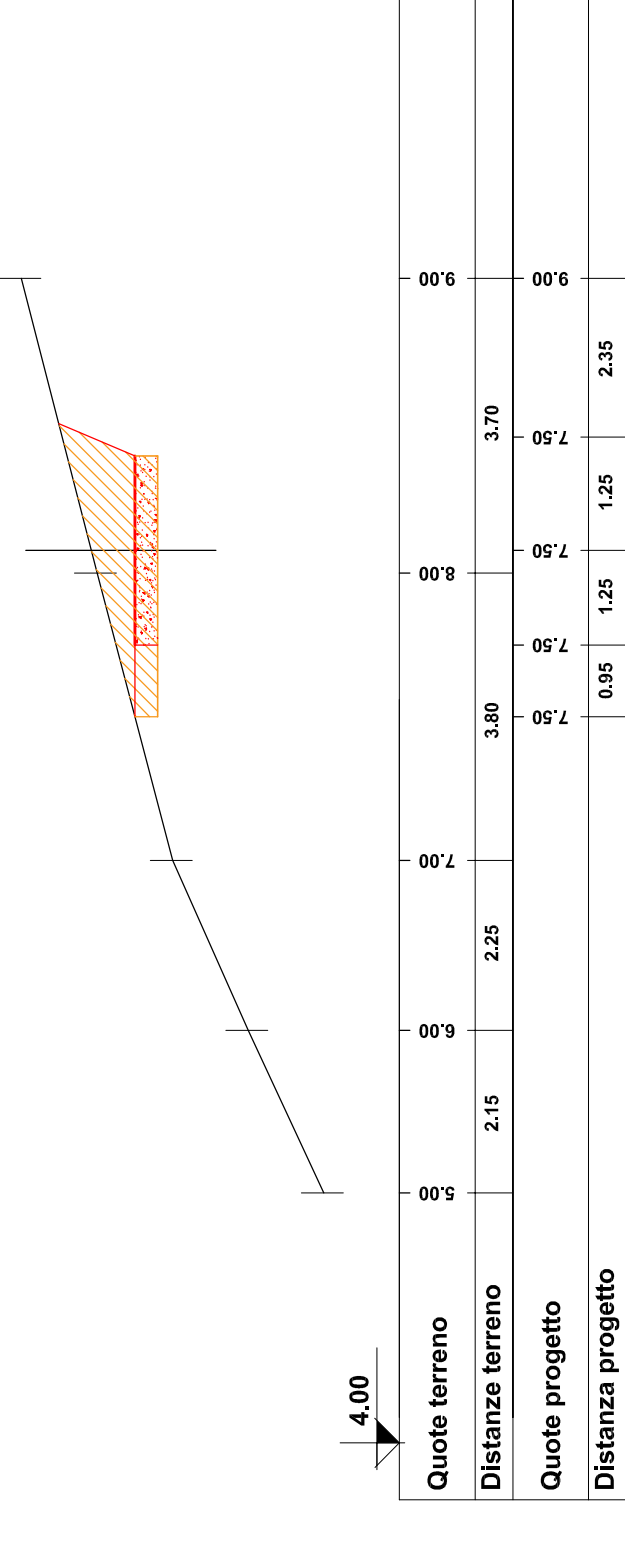


COMUNE DI	UBIALE CLANEZZO - BG
COMITENTE	Sig. MENEGHETTI MASSIMILIANO - SEGREZZI TULLIO
PROGETTO:	REALIZZAZIONE DI STRADA AL SERVIZIO DELL'ABITAZIONI ESISTENTI
	CONTRADDISTINTA al f. 5 mappe al 1247 sub 701
TAVOLA	SEZIONI TRASVERSALI - SEZIONE TIPO
IL PROGETTISTA	01 RESPONSABILE - DATA SUPERINTENDENZA AUTORIZZAZIONE
COMMENTI	

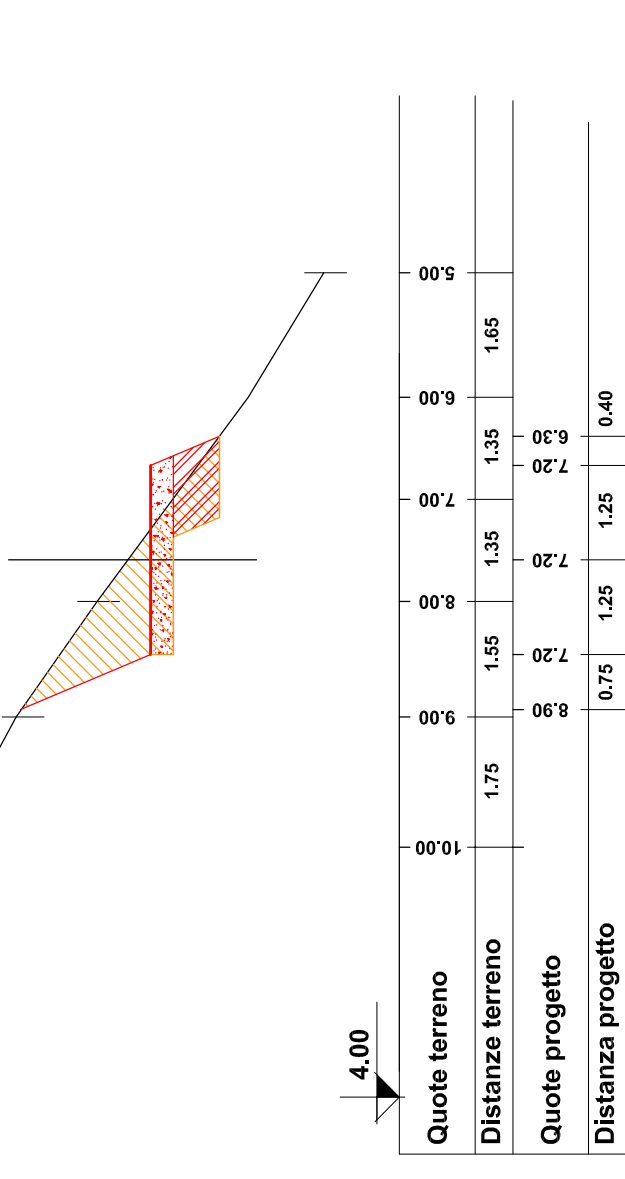
2
Progressiva 5.30
Sterro mq. 2.92
Riporto mq. 0.00



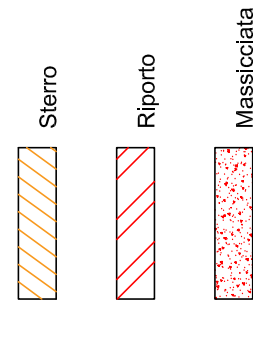
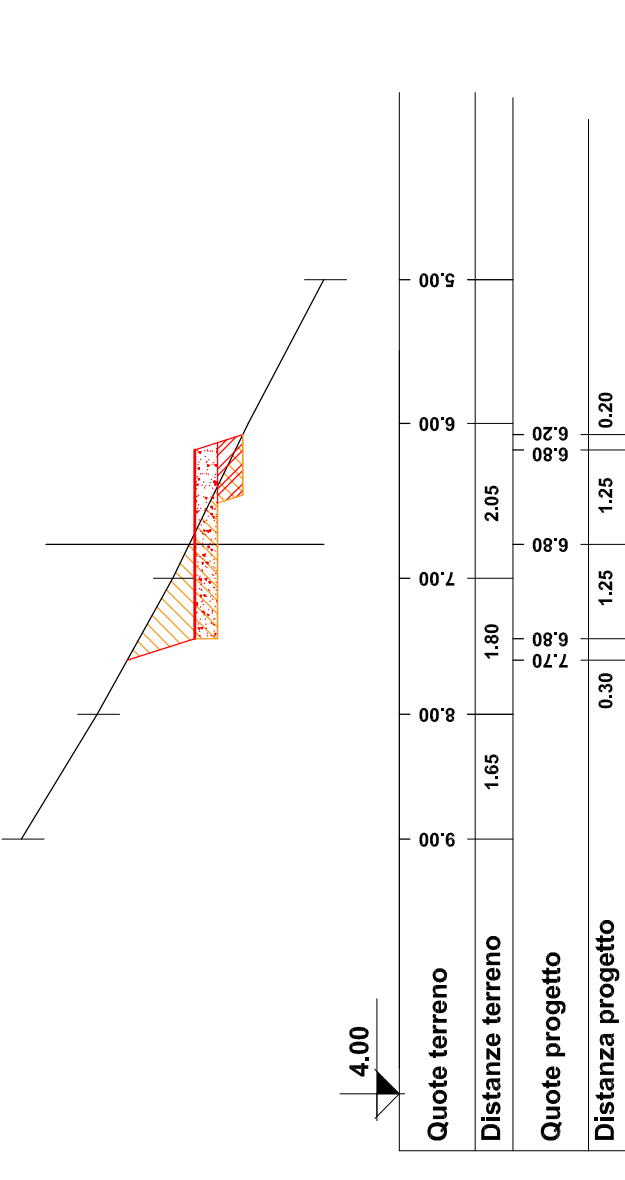
3
Progressiva 10.75
Sterro mq. 2.78
Riporto mq. 0.00



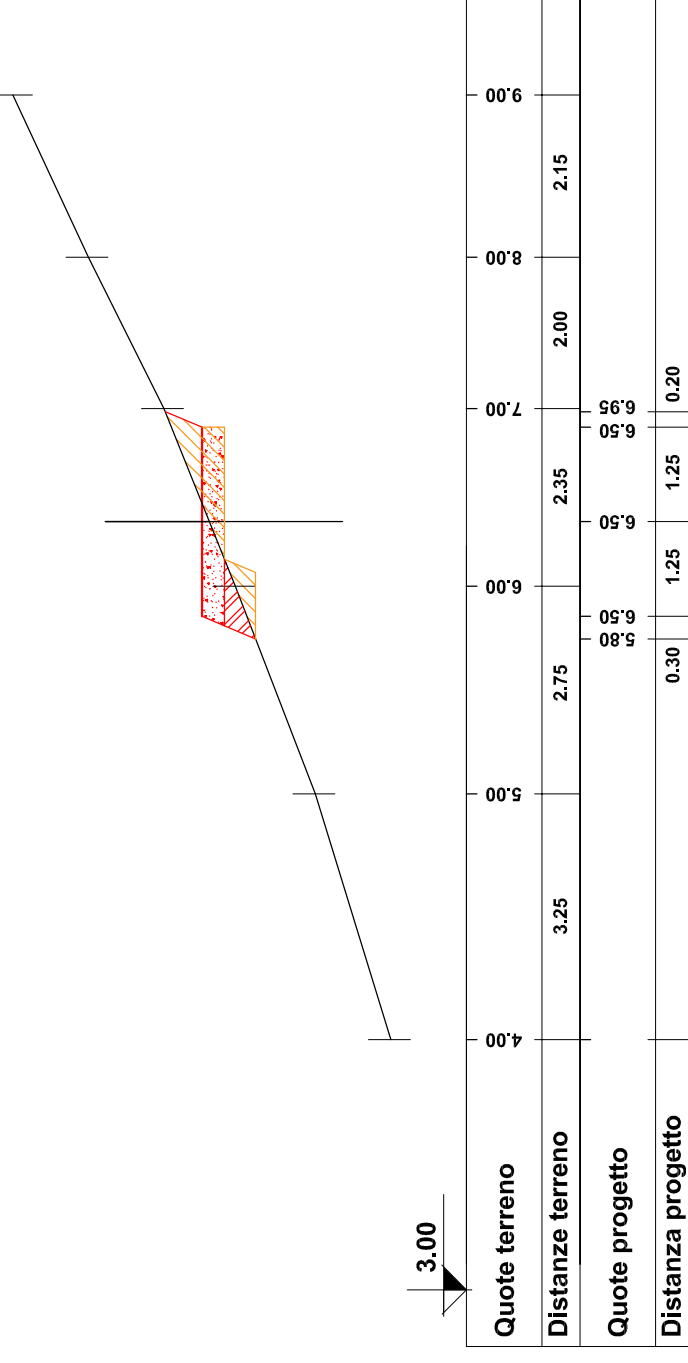
4
Progressiva 20.75
Sterro mq. 2.47
Riporto mq. 0.65



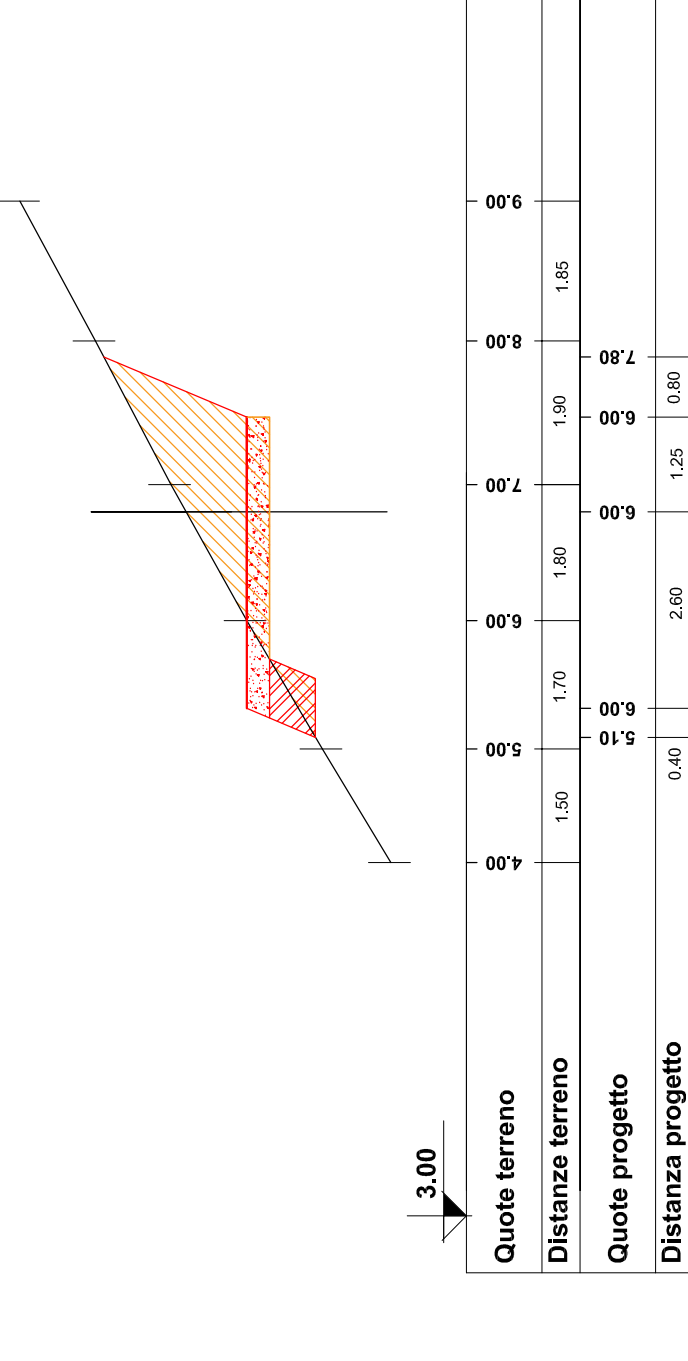
5
Progressiva 30.75
Sterro mq. 1.28
Riporto mq. 0.26



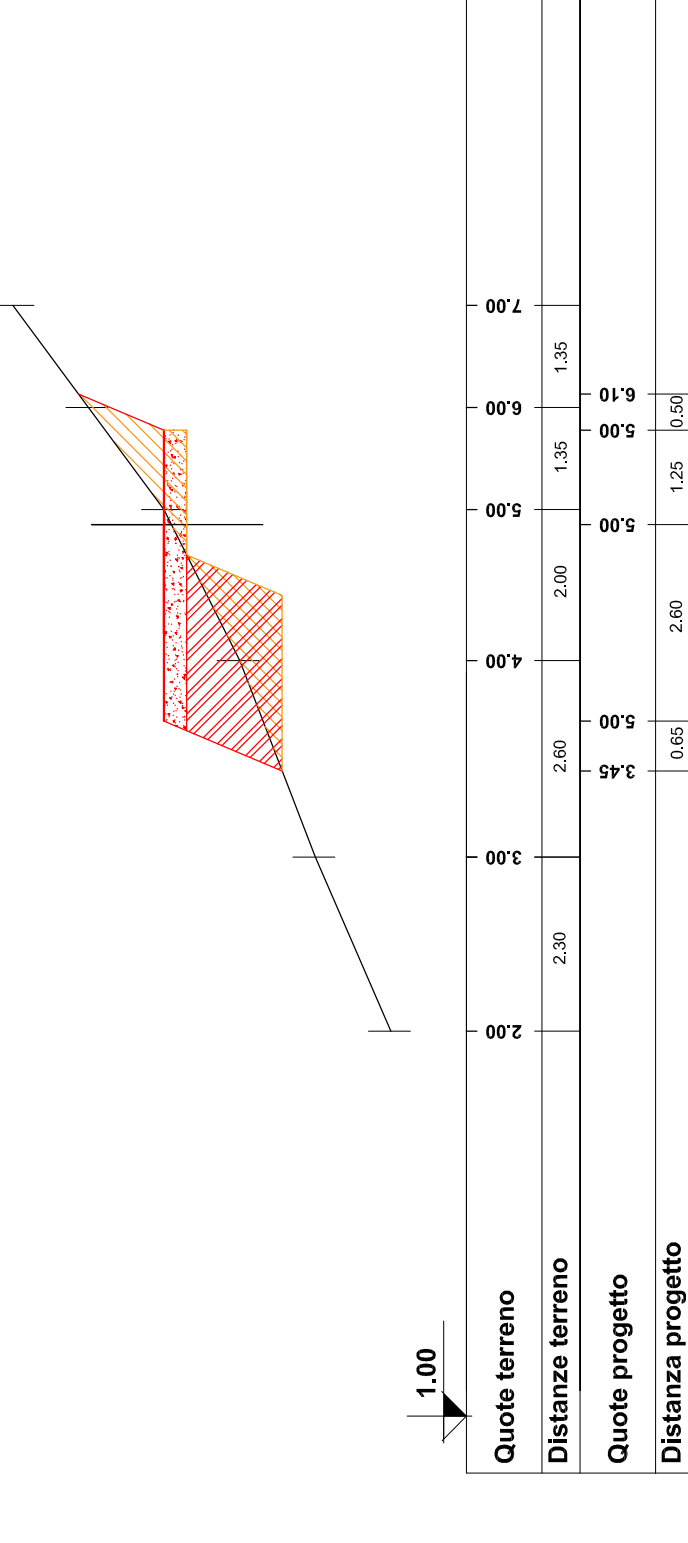
6
Progressiva 39.95
Sterro mq. 0.83
Riporto mq. 0.36



7
Progressiva 66.30
Sterro mq. 3.70
Riporto mq. 0.47



7
Progressiva 77.20
Sterro mq. 2.35
Riporto mq. 2.93



Sezione tipo

