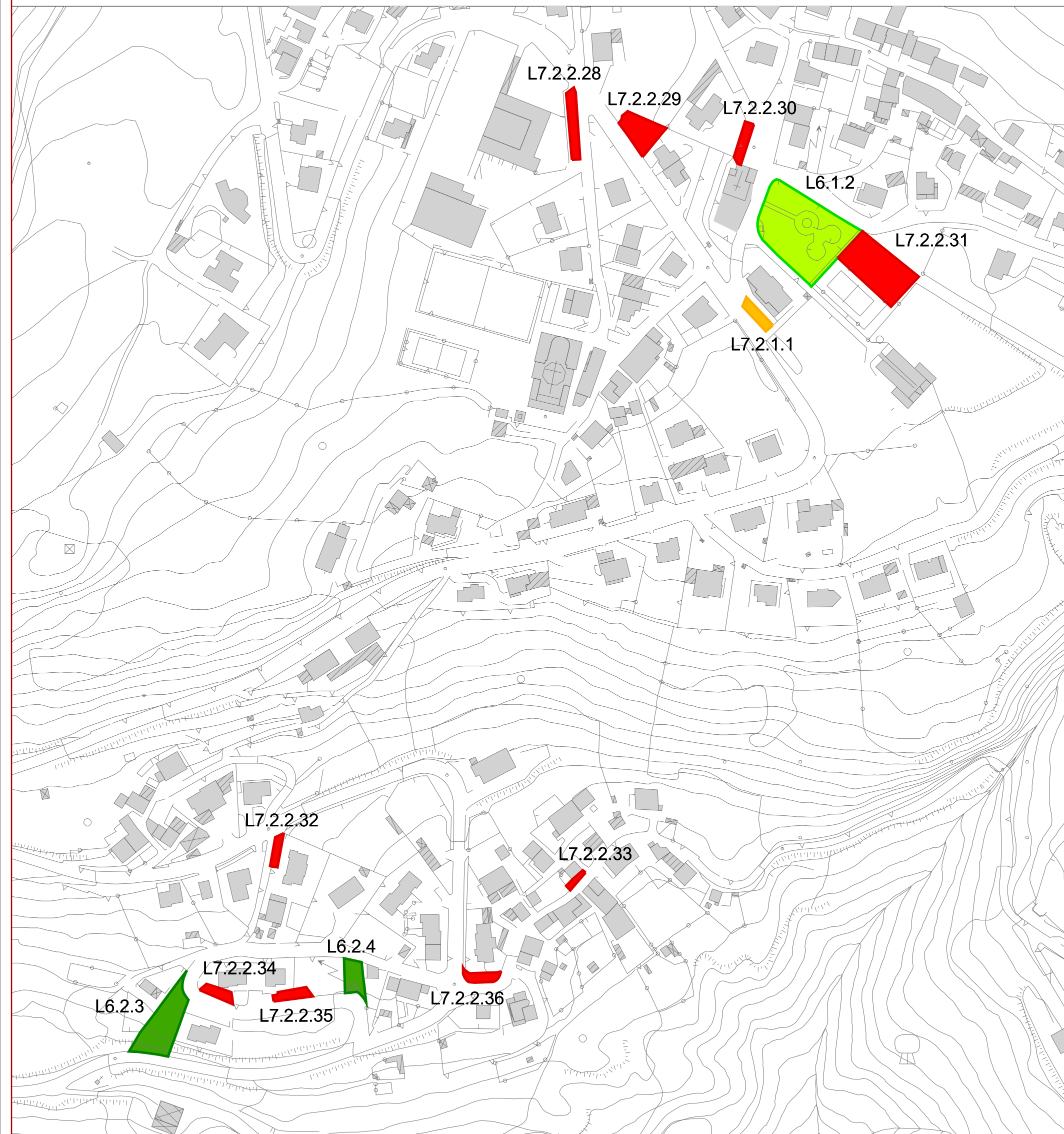
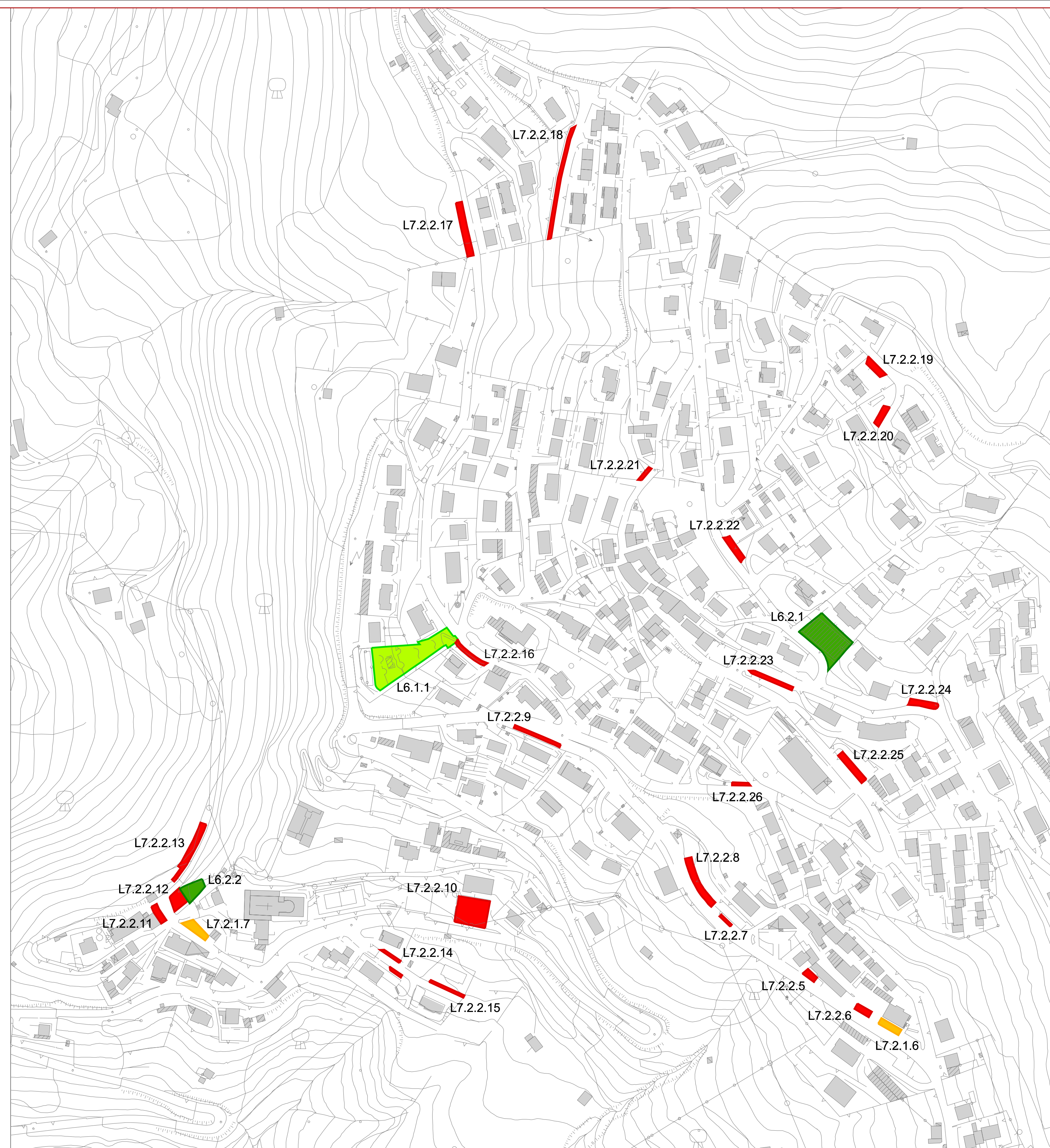


01 - Gazzo

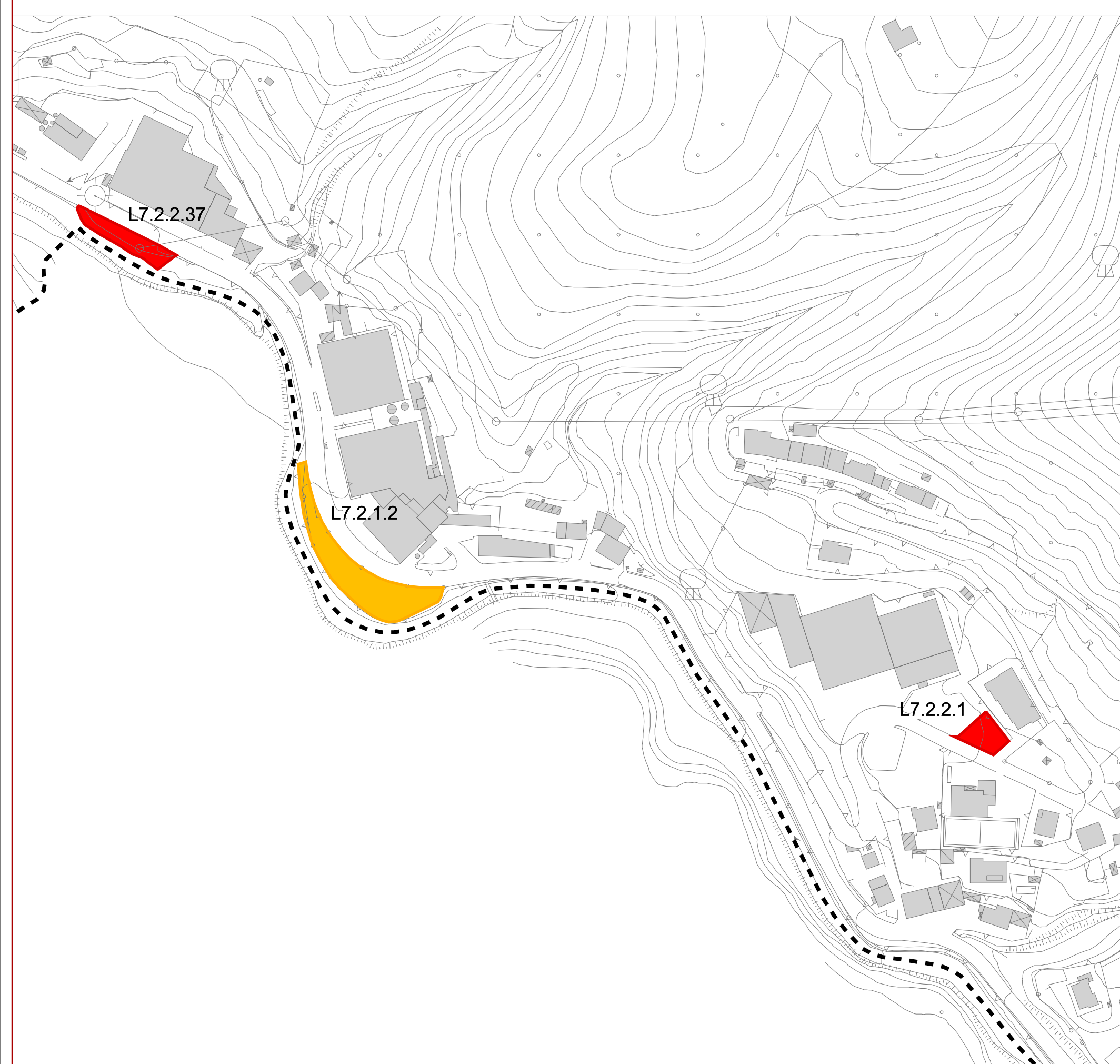
02 - Tagliata



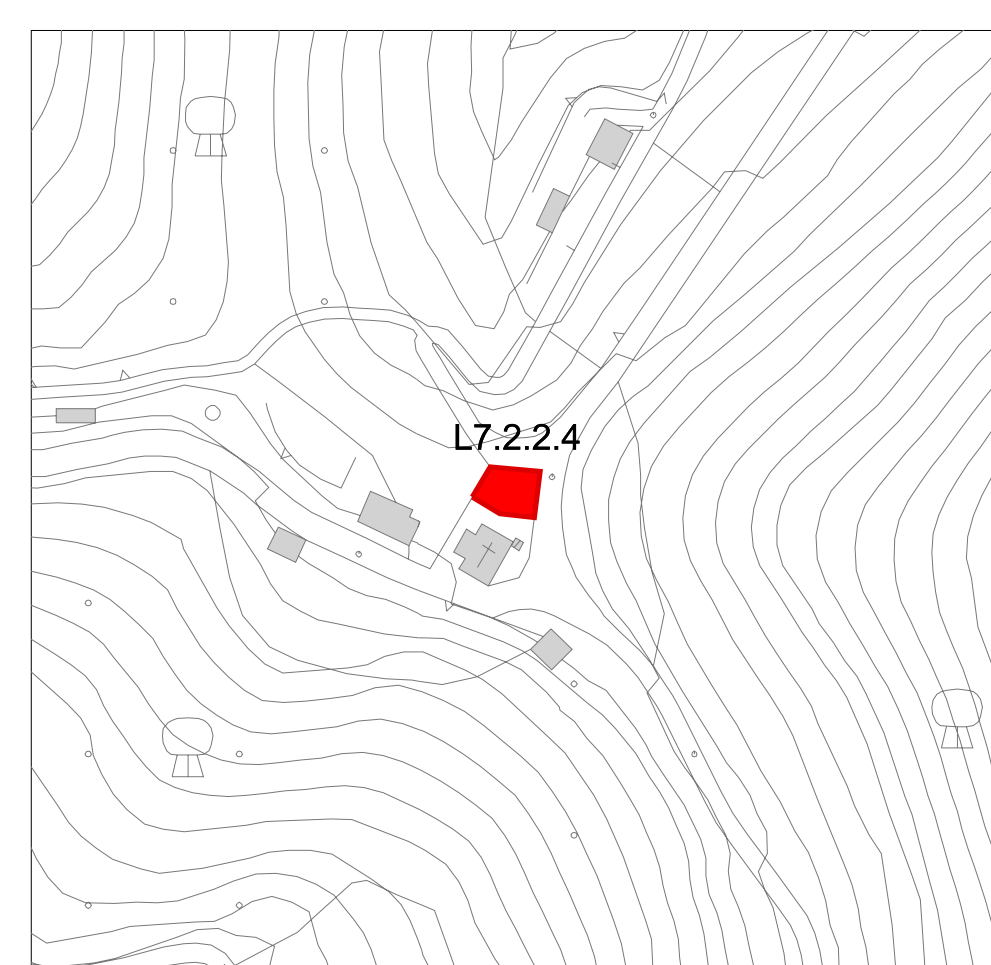
03 - Ascensione - Fondrea



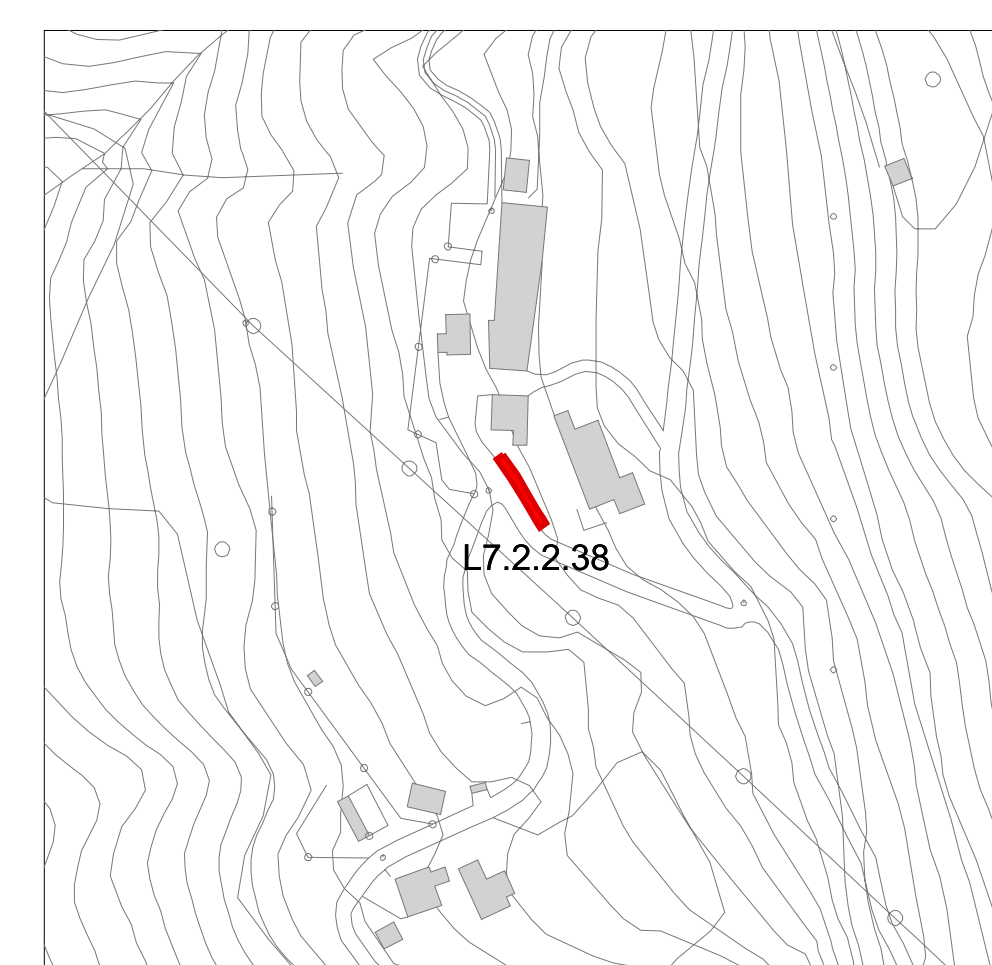
04 - Costa



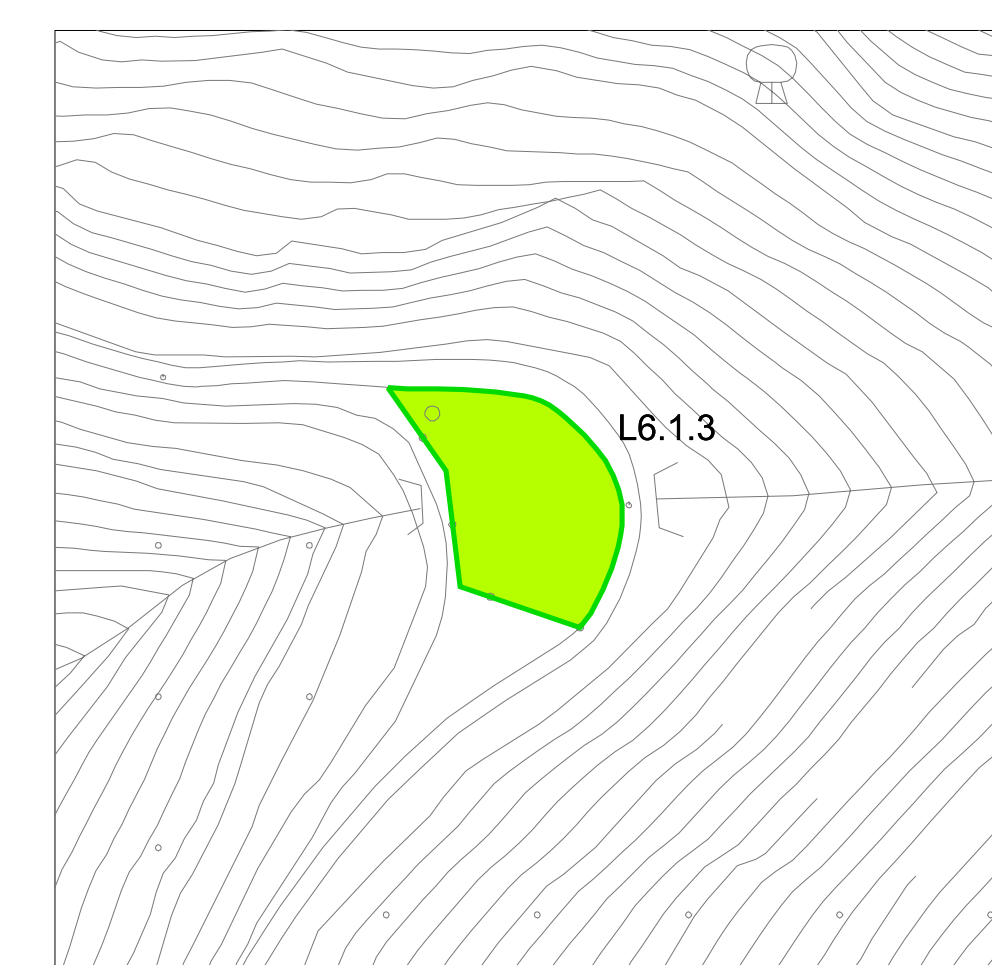
05 - Ambriola



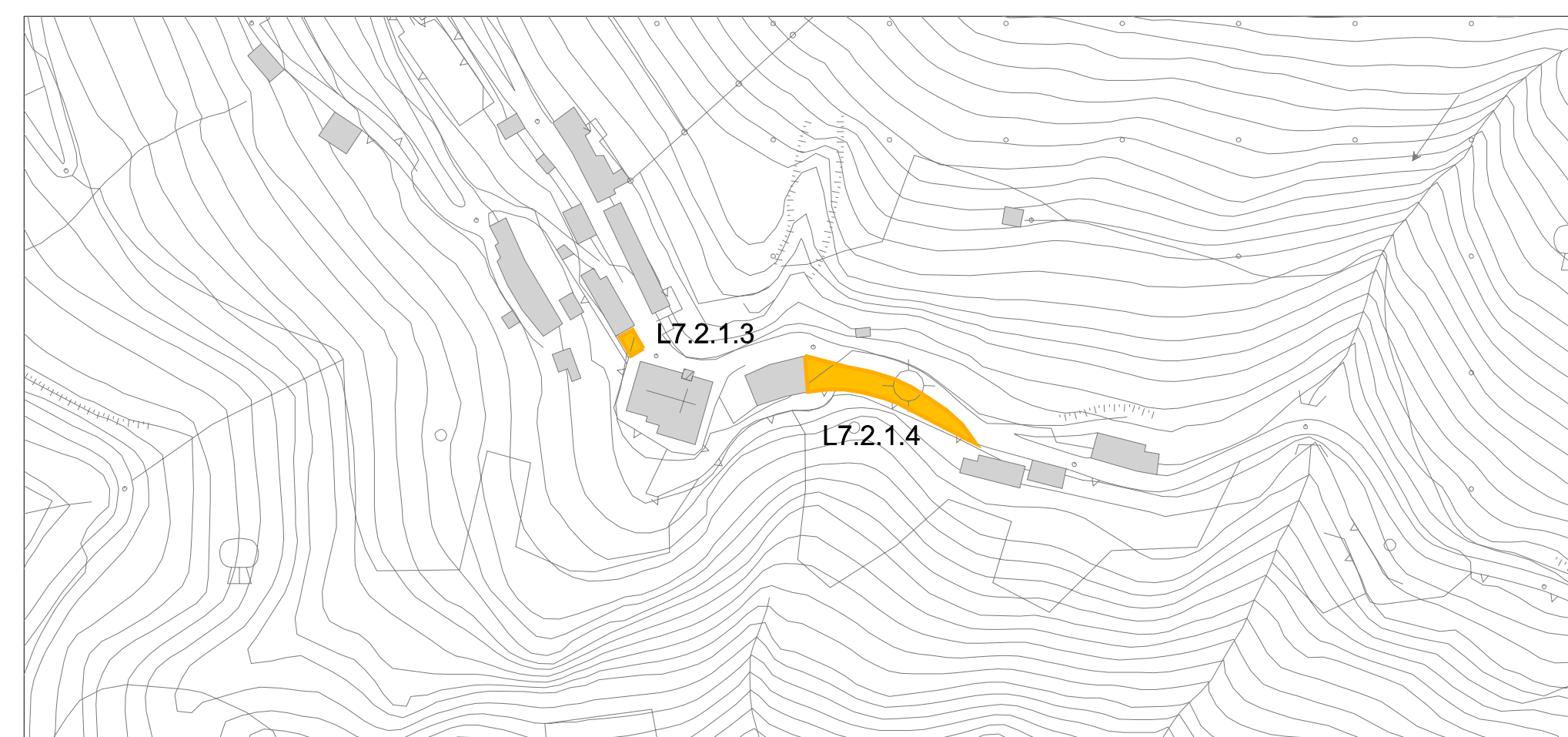
06 - Forcella



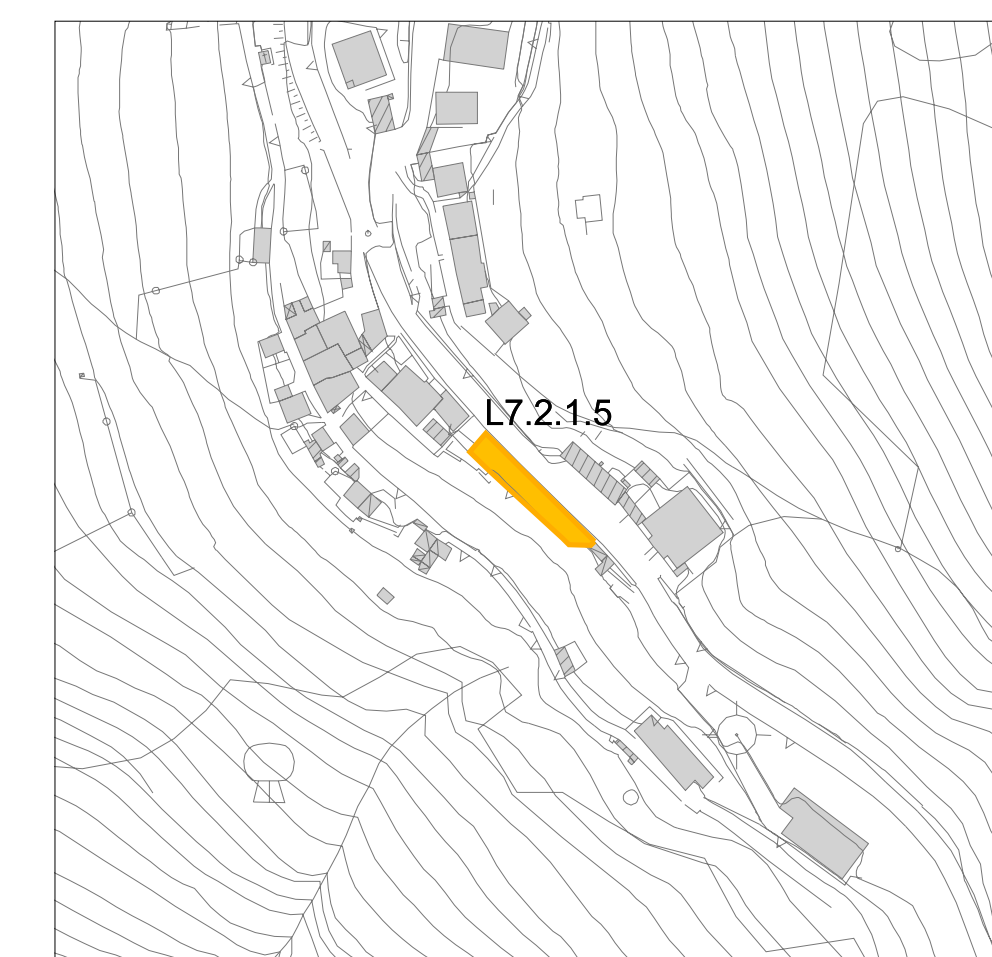
07 - Nespello



08 - Sant'Erasmo

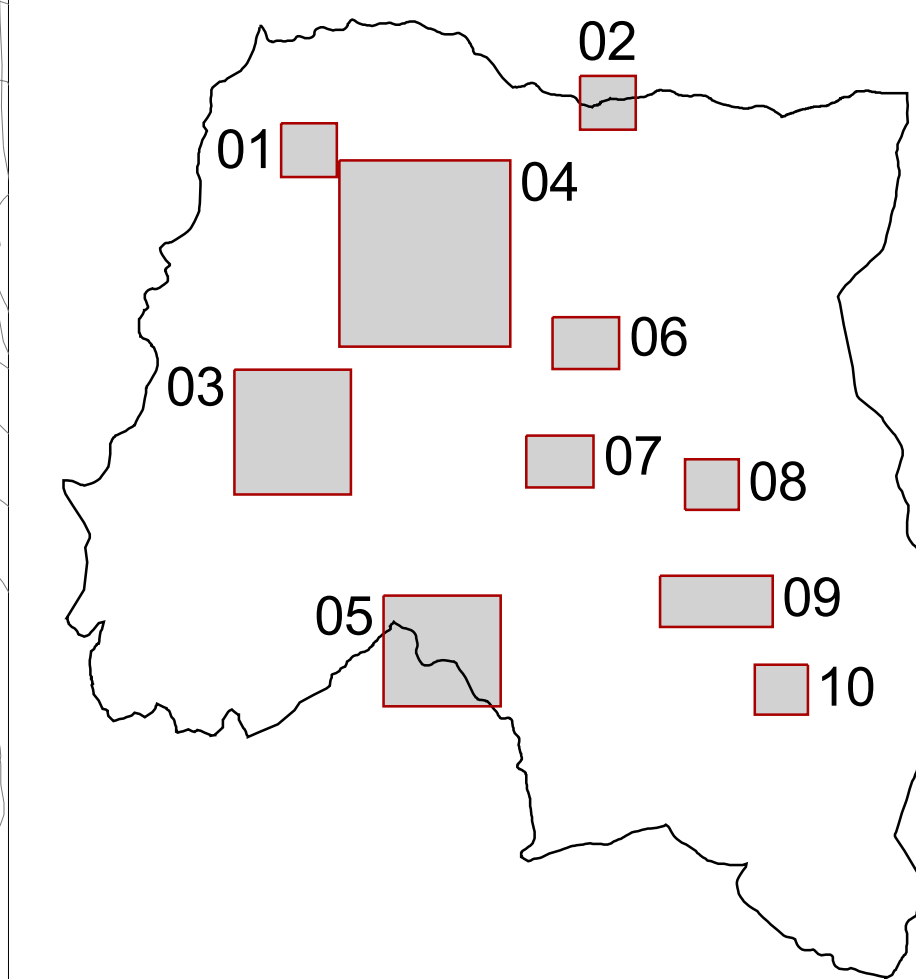


09 - Sant'Erasmo



10 - Trafficanti

- LEGENDA:**
- Confine comunale
 - Piano dei servizi - L6 Verde:**
 - L6.1 parchi gioco e aree attrezzate
 - L6.2 aree verdi
 - Piano dei servizi - L7.2 Sosta**
 - L7.2.1 parcheggi privati ad uso pubblico
 - L7.2.2 parcheggi pubblici



PIANO DI GOVERNO DEL TERRITORIO 2012

COMUNE DI
COSTA SERINA
PROVINCIA DI BERGAMO

PIANO DEI SERVIZI

QUADRO RICOGNITIVO

PaS1.2b

Tavola dei Servizi
Parcheggi e verde
Stato di fatto

scala 1:2.000

R2STUDIO
via Don Carlo Botta, 9 - 24122 Bergamo tel. fax 035 270074

PROGETTO DEL PIANO
Progettista urbanista
dott. arch. Alessandro Rota Martir

Consulenti
dott. arch. Matteo Riva
Claudio Ferrante

Consulente storico
dott. arch. Paolo Mazzariol

Studi per le componenti geologica e sismica:
Studio Castalia
dott. Davide Incerti, dott. Giulio Mazzolioli