


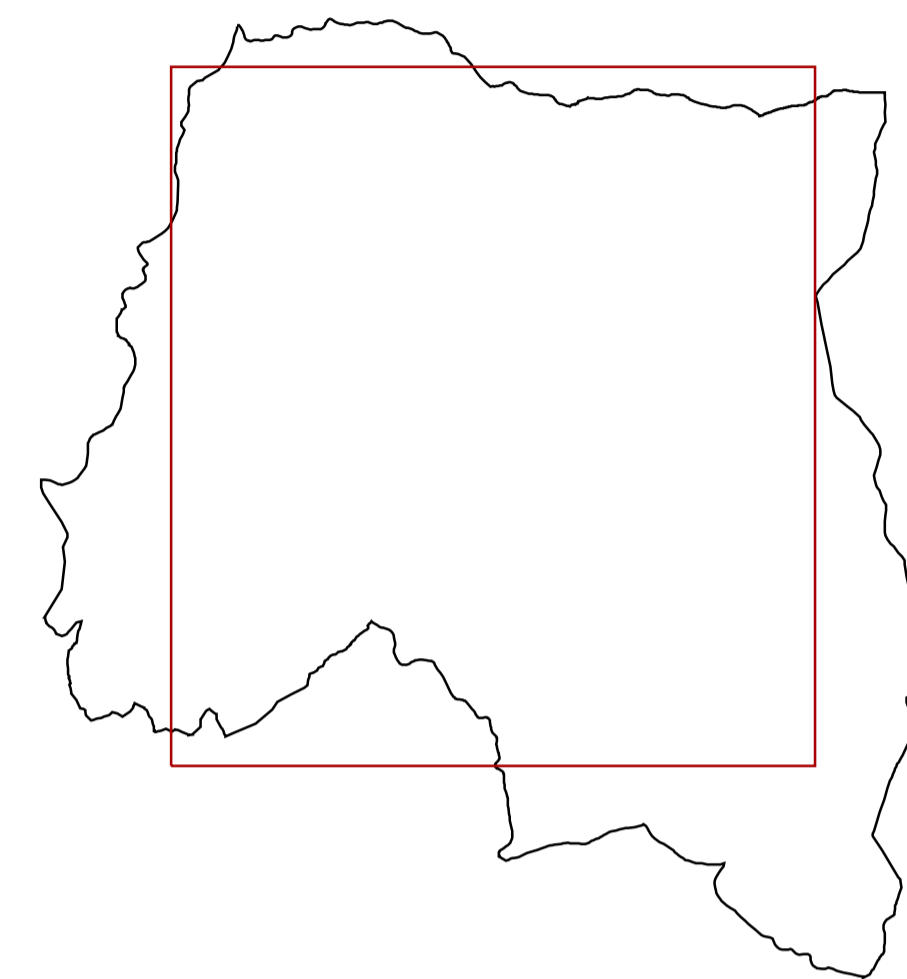


LEGENDA:

--- Confine comunale

Rete fognatura pubblica:

-  acque miste
-  acque bianche
-  acque nere



PIANO DI GOVERNO DEL TERRITORIO 2012

COMUNE DI  
**COSTA SERINA**  
PROVINCIA DI BERGAMO

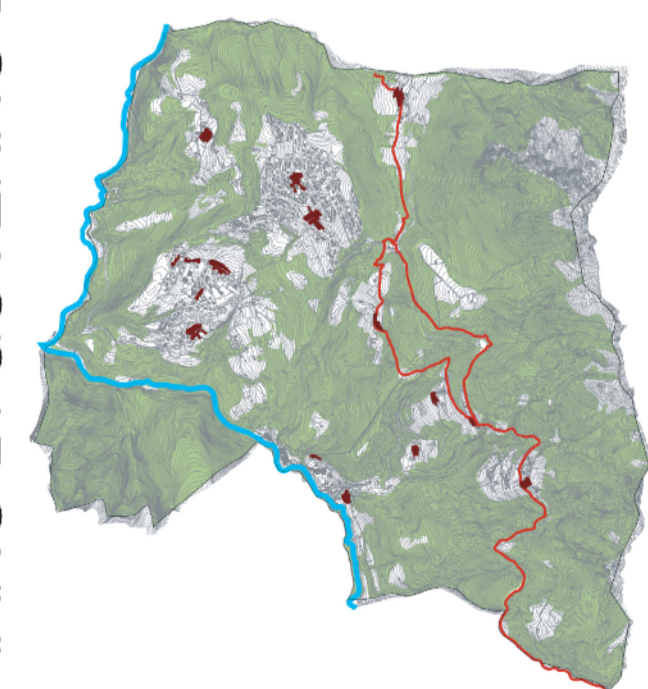
PIANO DEI SERVIZI


QUADRO RICOGNITIVO

**PdS1.3c**

Infrastrutture  
tecnologiche:  
fognatura

scala 1:5.000



 **R2STUDIO** via Don Carlo Botta, 9 - 24122 Bergamo tel./fax 035 270074

PROGETTO DEL PIANO

Progettista urbanista  
dott. arch. Alessandro Rota Martir

Consulenti  
dott. arch. Matteo Riva  
Claudio Ferrante

Consulente storico  
dott. arch. Paolo Mazzarioli

Studi per le componenti geologica e sismica:  
Studio Castalia  
dott. Davide Incerti, dott. Giulio Mazzoleni