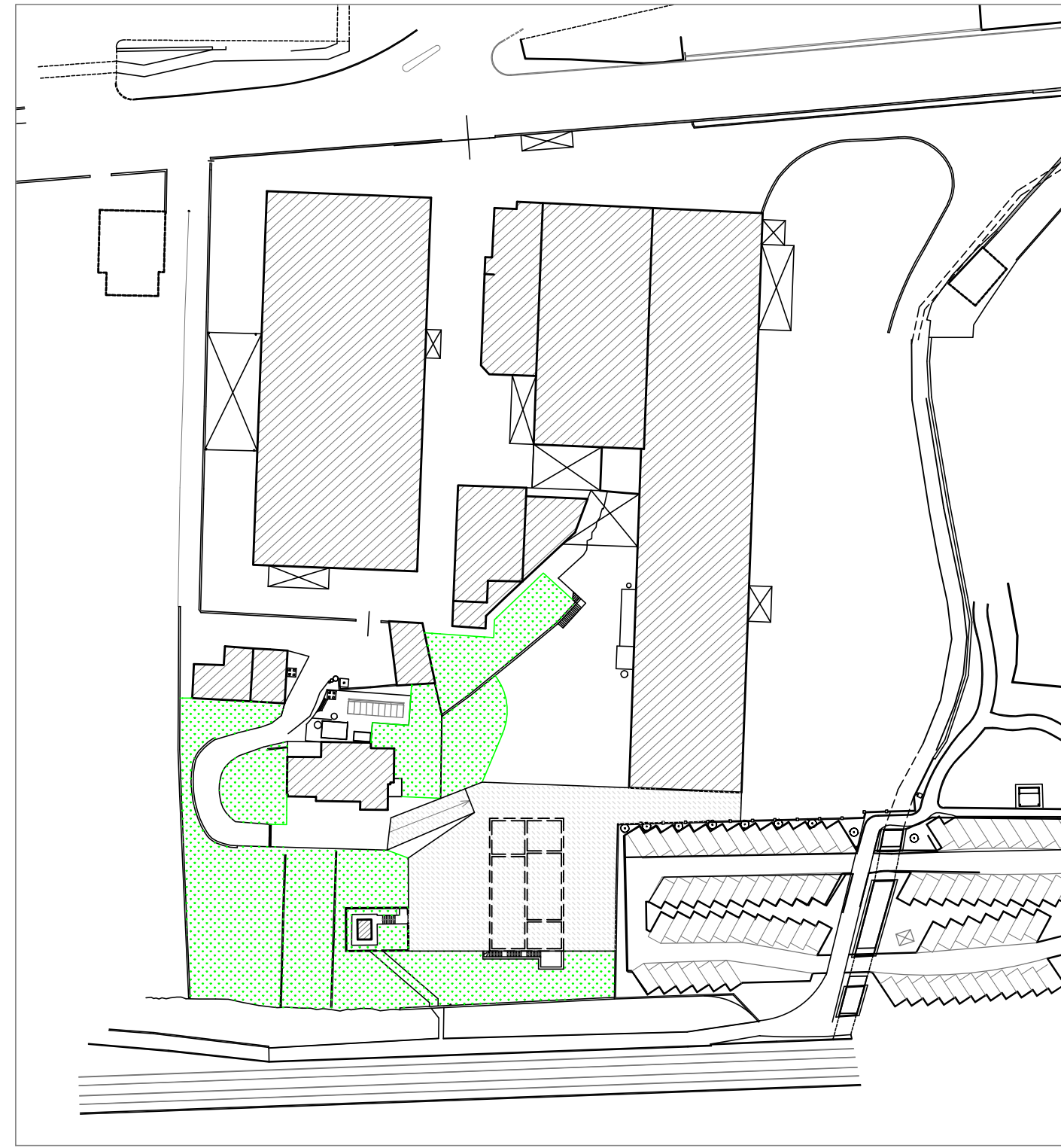


### Planimetria superficie drenante

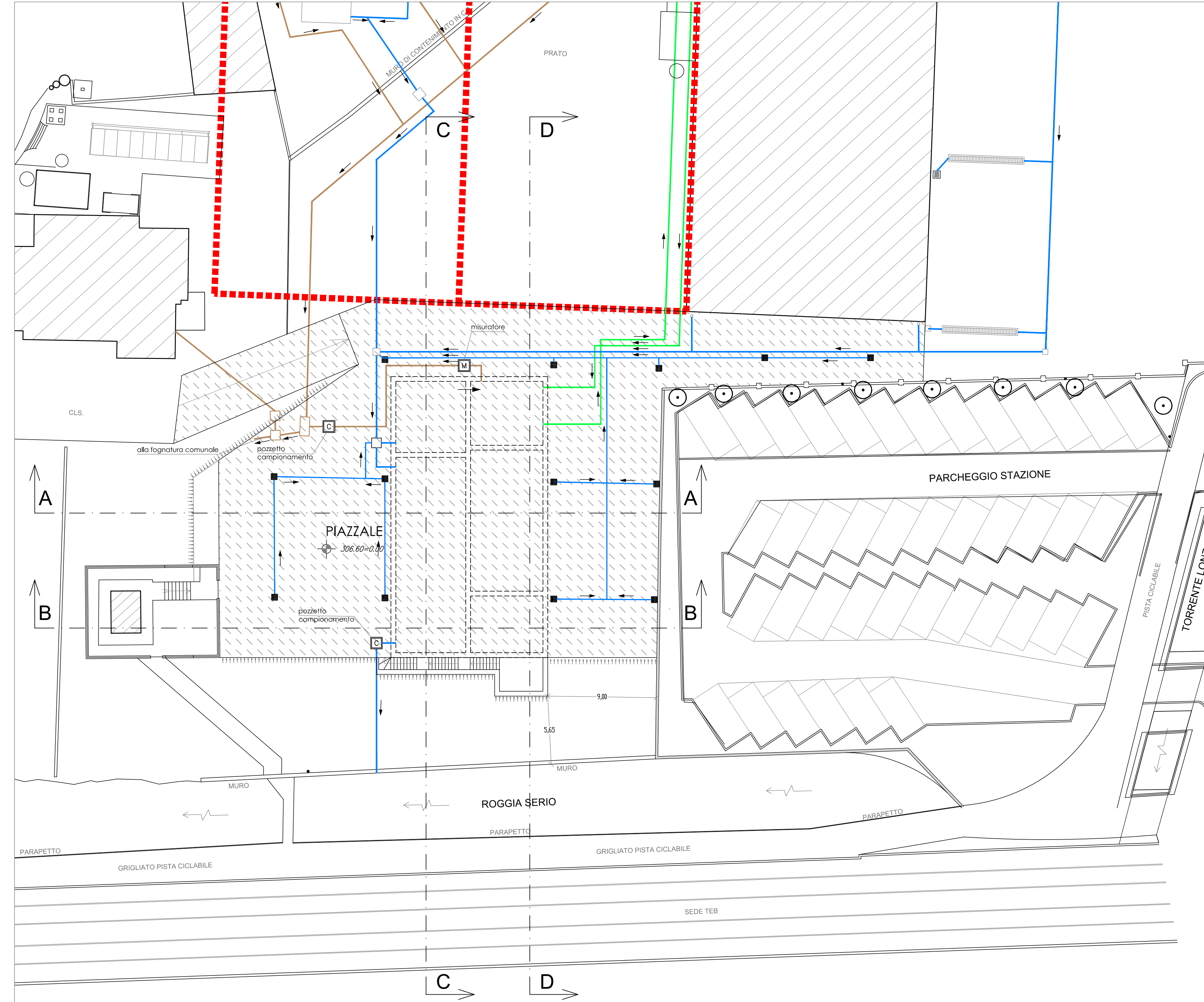


### Legenda

Verde drenante (2.193 mq)

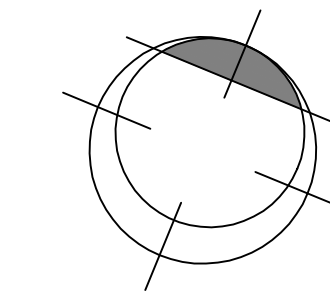
Superficie fondiaria nuova (Sf) = 16.662,27 mq - Superficie coperta esistente (Sc) = 6.250,77 mq  
 Superficie scoperta e drenante minima (15% di Sf-Sc) = 1.561,73 mq < 2.193 mq

### Planimetria

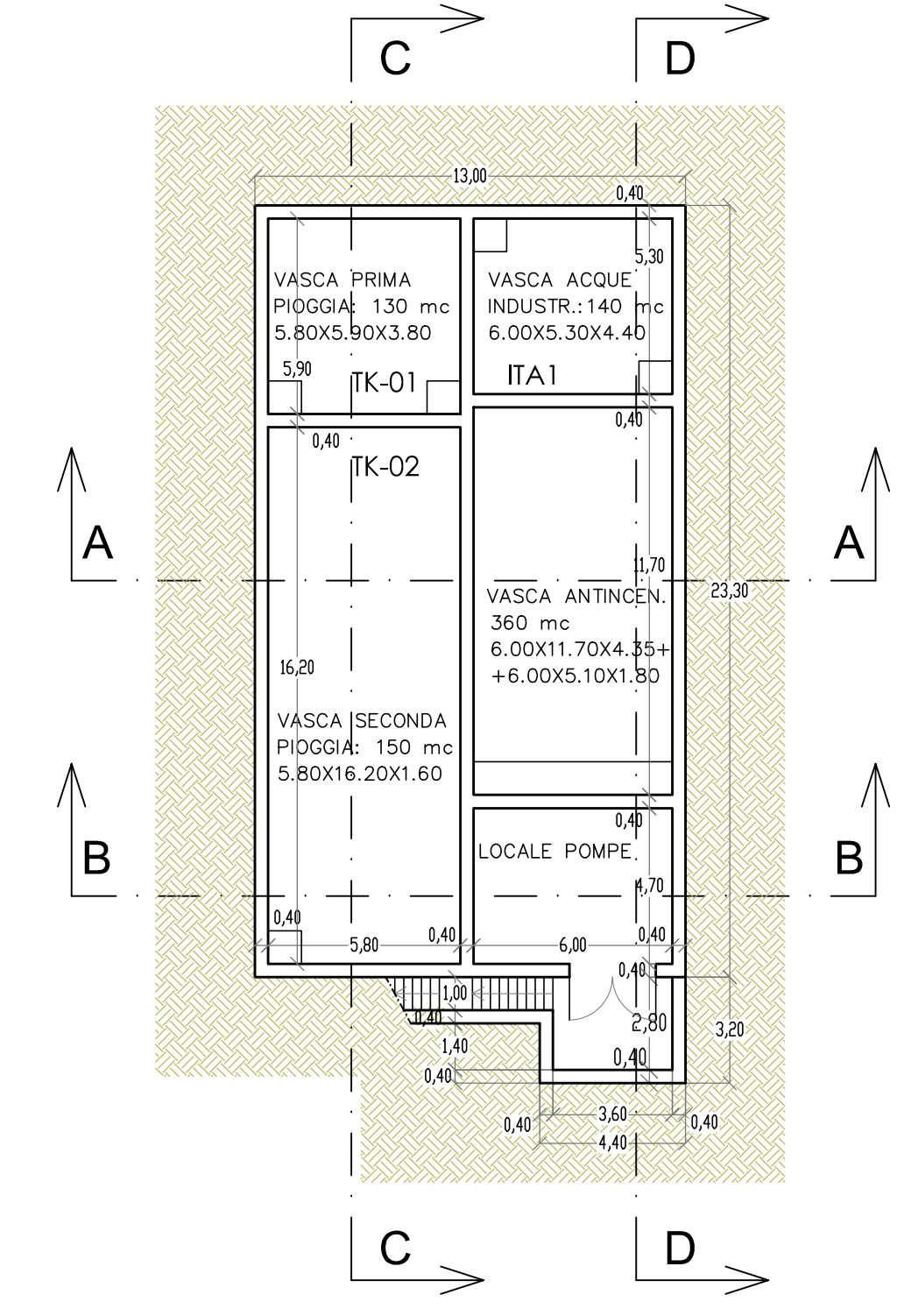


### Legenda

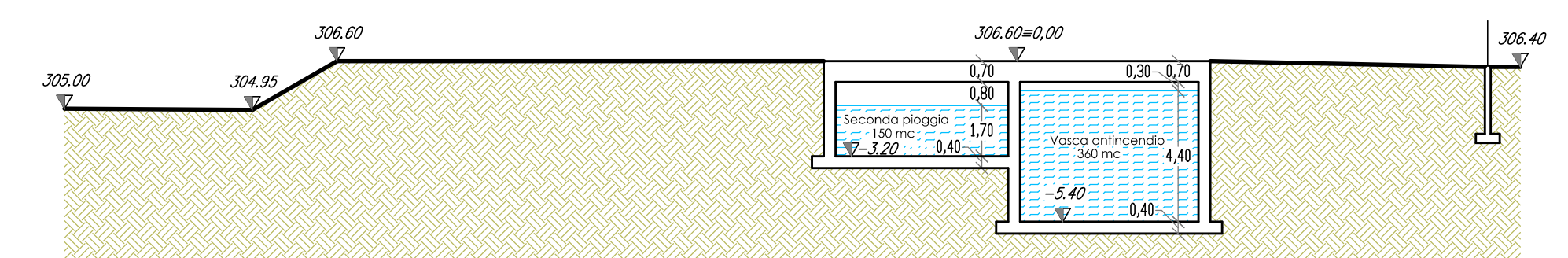
- Acque bianche
- Acque nere
- Acque industriali
- Fabbricati di futura edificazione
- Pavimentazione in cls



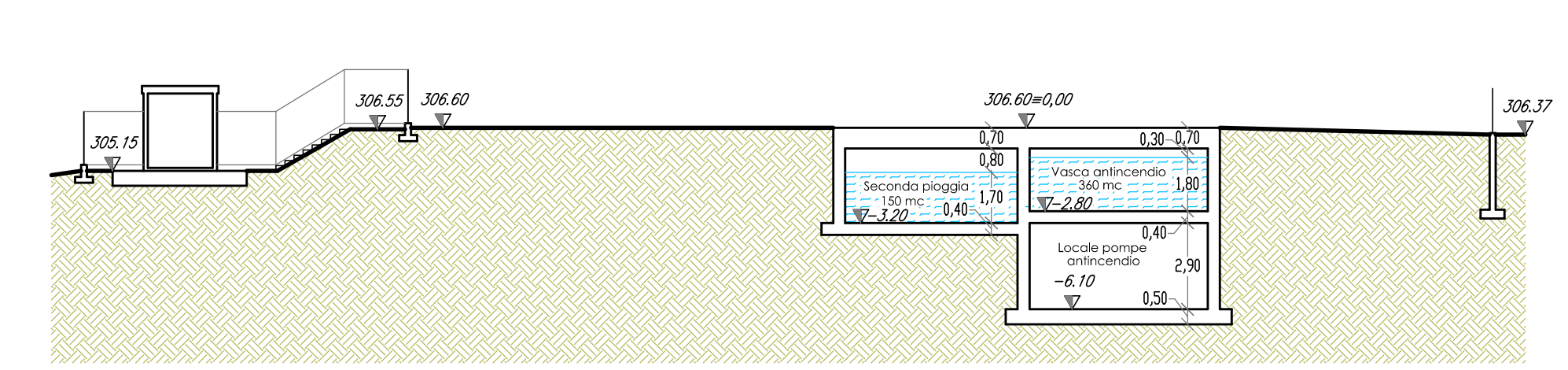
### Pianta



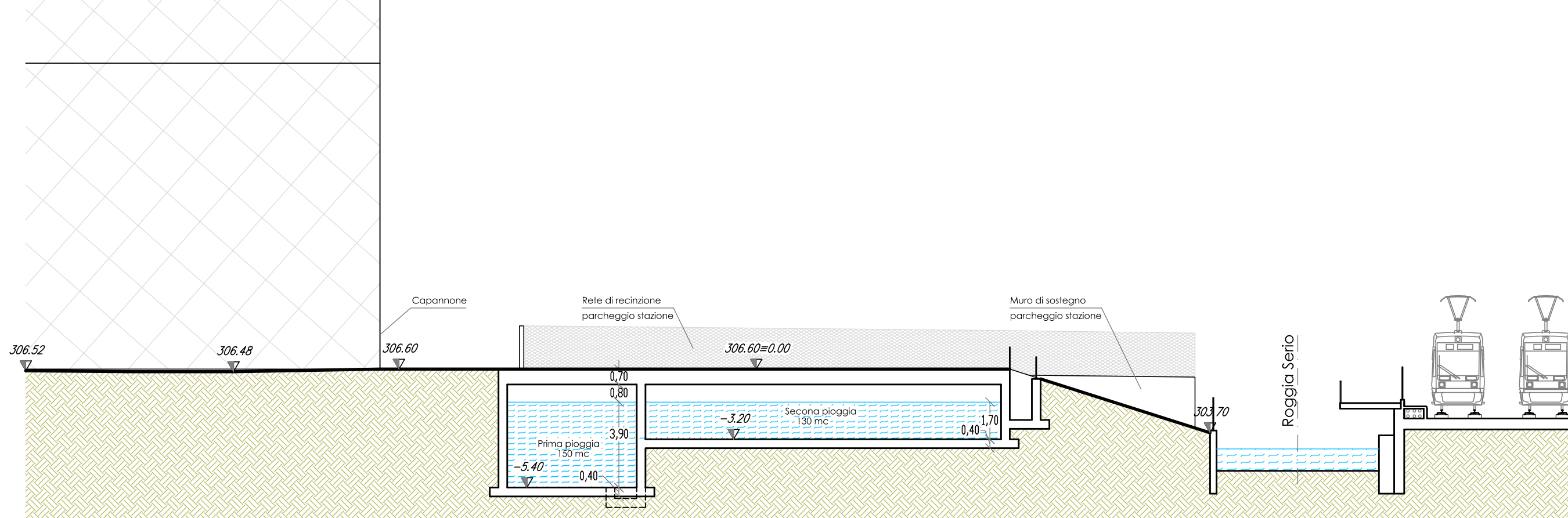
### Sezione A-A



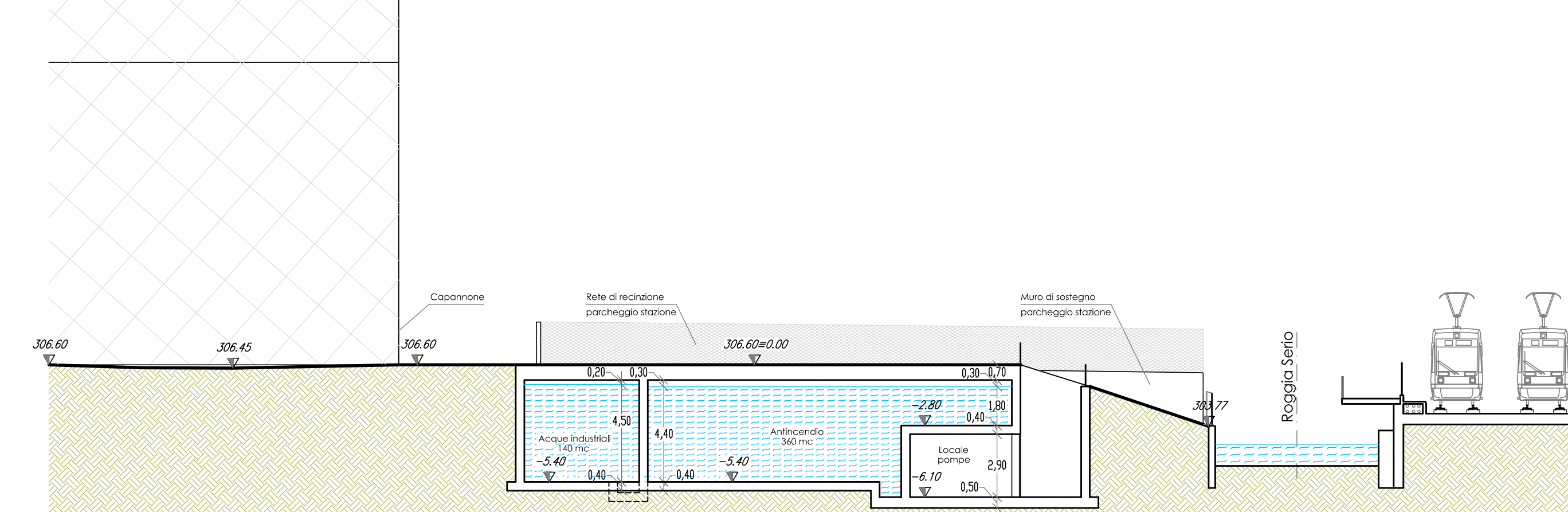
### Sezione B-B



### Sezione C-C



### Sezione D-D



Comune di NEMBRO Provincia di BERGAMO

**Progetto nuove vasche interrate per acque meteoriche, industriali e antincendio - S.U.A.P IN VARIANTE AL P.G.T. Mappali 4223 - 8644 - 9091 - 9092 - 9093**

Apollo sessantanove S.p.A. - F.lli Gandossi Acciaierie Elettriche S.p.A.

Scala 1:1.000	<b>PROGETTO NUOVE VASCHE</b>	Tav. 10	10/11/2017
Scala 1:200	Progetto: planimetrie, pianta e sezioni		

000147	R1403
MB - RB	Tav. 9-10-11-20171110.dwg

BARCELLA STUDIO TRE

Via Orti, 4 - 24027 Nembro (BG)  
Tel. 03526977 - Fax 0354721207

ARCH. RAFFAELE BARCELLA  
GEOM. VANESSA BARCELLA  
GEOM. MASSIMILIANO BARCELLA

Dot. Arch. Raffaele BARCELLA

Geom. Massimiliano BARCELLA