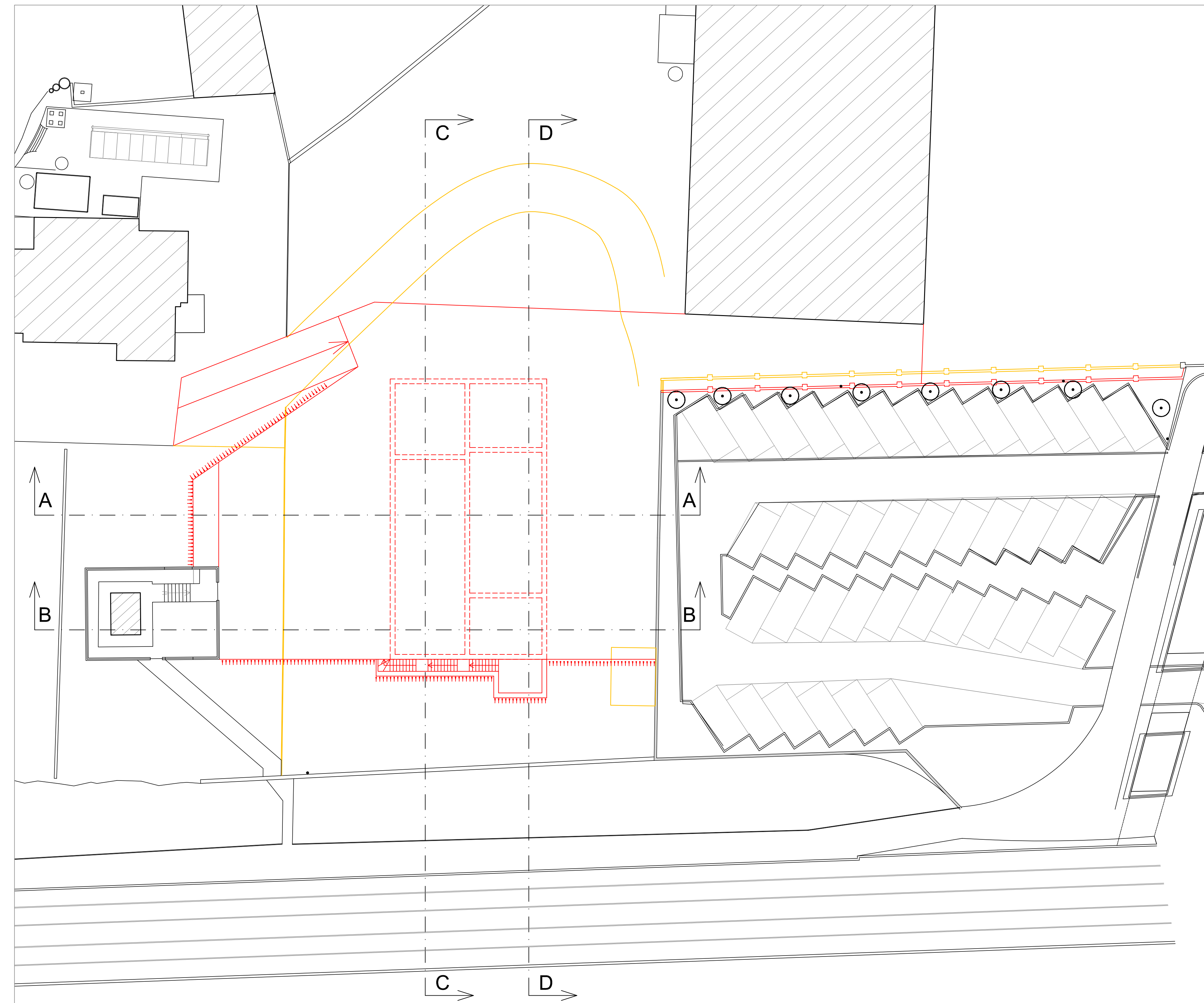
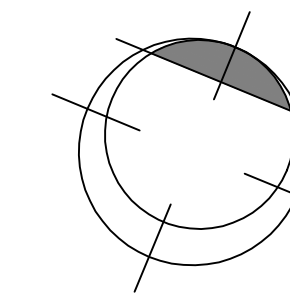


Planimetria

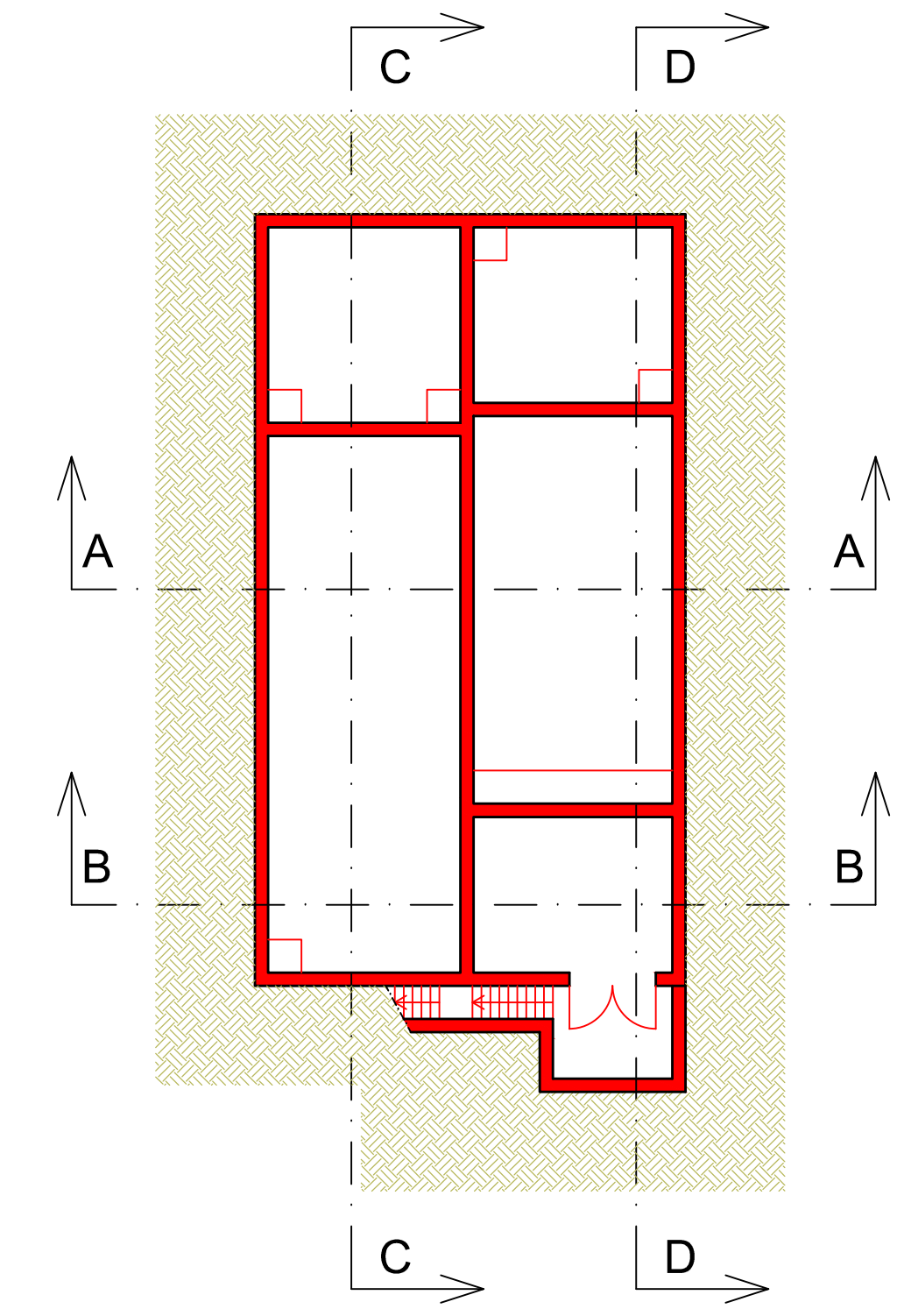


Legenda

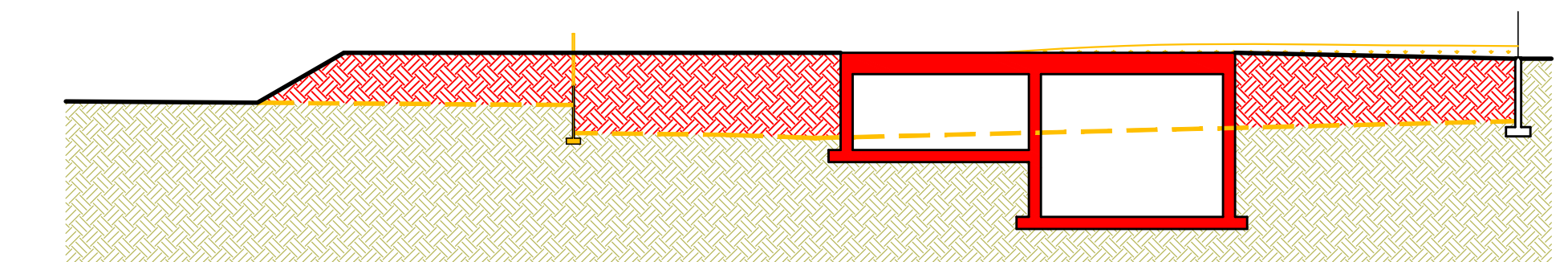
- Demolizione
- Nuova costruzione



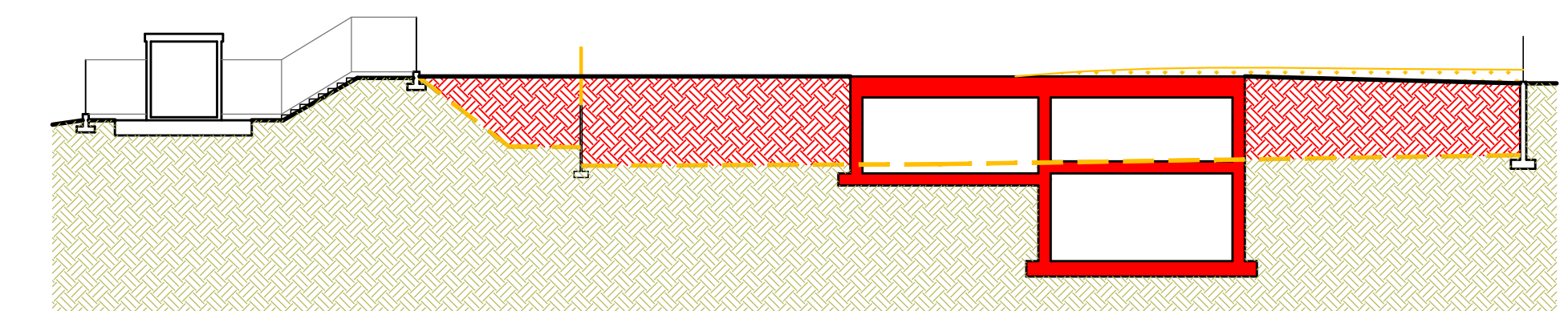
Pianta



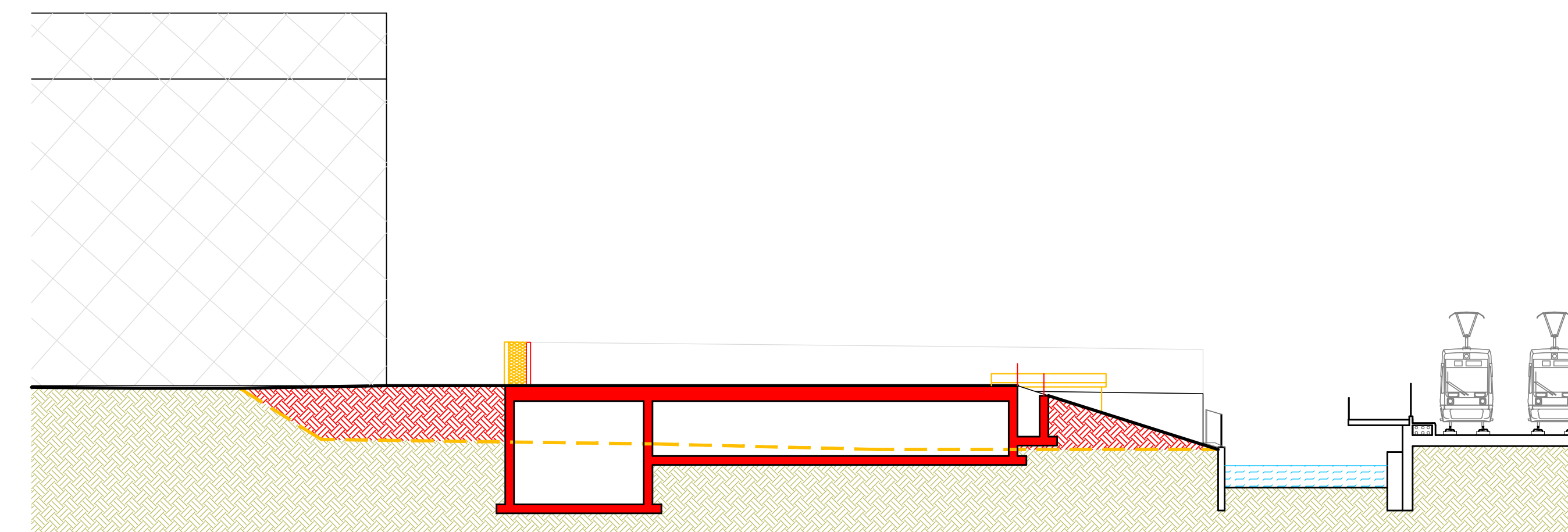
Sezione A-A



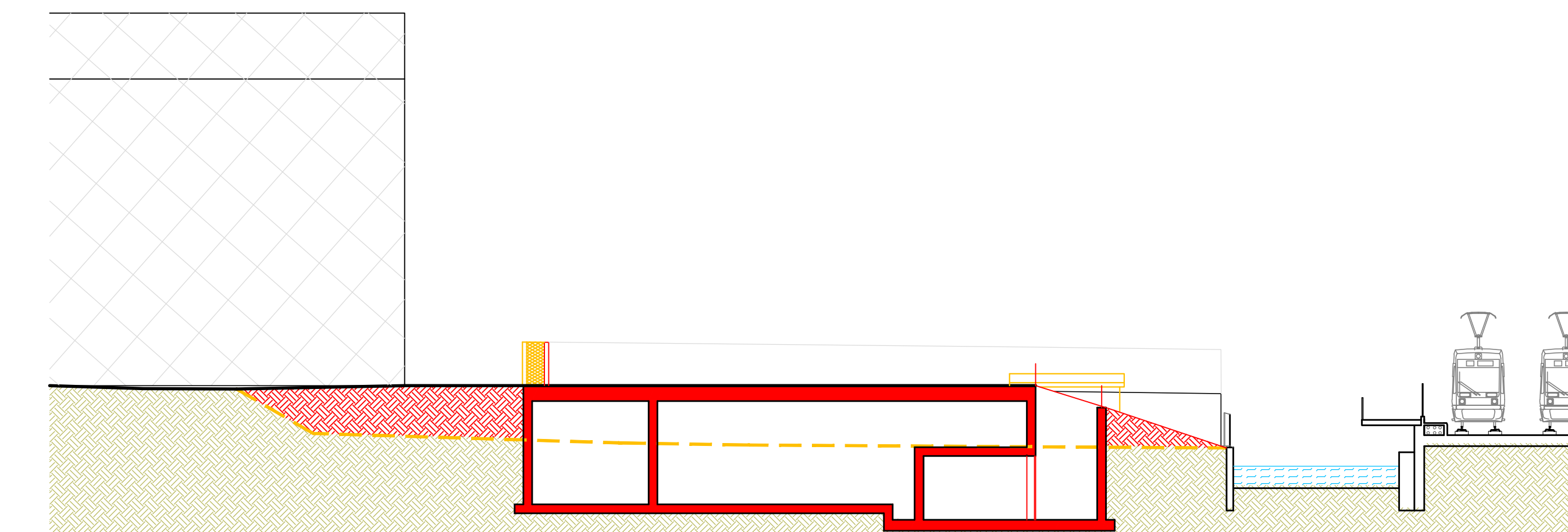
Sezione B-B

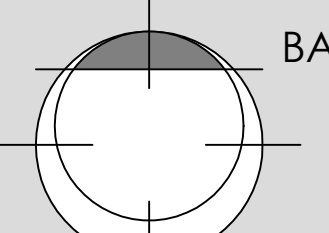




Sezione C-C



Sezione D-D



Comune di NEMBRO		Provincia di BERGAMO	
Progetto nuove vasche interrato per acque meteoriche, industriali e antincendio - S.U.A.P IN VARIANTE AL P.G.T. Mappali 4223 - 8644 - 9091 - 9092 - 9093			
Apollo sessantanove S.p.A. - F.lli Gandossi Acciaierie Elettriche S.p.A.			
Scala 1:200	PROGETTO NUOVE VASCHE Comparato: planimetria, pianta e sezioni	Tav. 11	10/11/2017
000147	R1403		
MB - RB	Tav. 9-10-11 20171110.dwg		
 BARCELLA STUDIO TRE	Via Orti, 4 - 24027 Nembro (BG) Tel. 03526977 - Fax 0354721207	 Dott. Arch. Raffaele BARCELLA	 Geom. Massimiliano BARCELLA